

# Sakamoto Auscultation Simulator

- Weight/About 14kg ● Case size/W65×D58×H28cm
- Accessories/USB cable, CD-ROM soft (Japanese, English), Stethoscope, Chest cover, Storage case

By reproducing various symptoms, supports practice of auscultation with a feeling of being in a clinical situation.



Chest cover (Indicate auscultatory site)



\*The personal computer is not included.

## Feature

### 1. Learning through practice with a sense of reality

- Sternum and soft touch of the skin
- Seven built-in speakers (volume adjustable) provide true-to-life experience of hearing cardiac and breath sounds of actual patients by applying a stethoscope.

### 2. Realistic auscultatory sounds

- Reproduction of complicated cases is possible by combinations of 20 cases of cardiac sounds and 12 cases of breath sounds.
- Differences in auscultatory sounds can be confirmed realistically by the use of a personal computer (Windows).

### 3. Adjustable to details

- The heart rate and respiratory rate are adjustable.
- The volume of cardiac and breath sounds is adjustable in each region (cardiac and pulmonary regions) or all regions.

### 4. Presentation of case profiles

- Presentation of case profiles and points of attention with graphs facilitates understanding of characteristics of each disease.

## Specifications

Size	Main unit W55×D23×H50cm Box W16×D23×H 9cm
Heart sounds	20 cases×4 sites
Heart rate	adjustable
Respiratory sounds	12 cases×3 sites
Respiratory rate	adjustable
Volume	adjustable
Power source	AC100V 50/60Hz
Consumption of electricity	100W
Operating temperature range	5~40°C

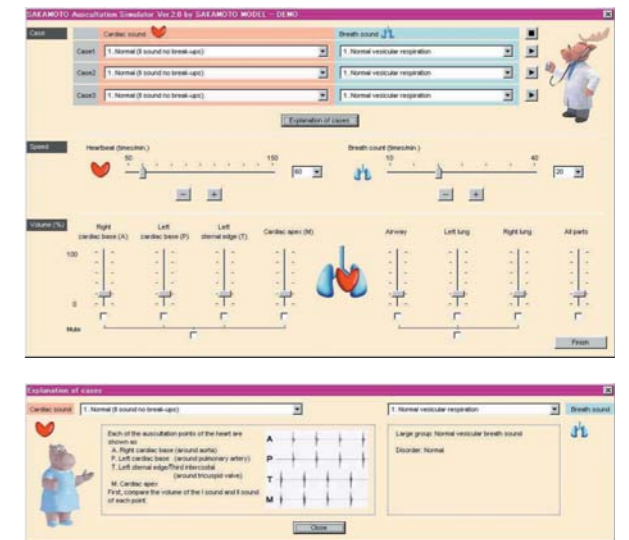
## Component Requirement

	Windows XP	Windows Vista	Windows 7
OS	Home Edition Professional	Home Basic Home Premium Business Ultimate	Home Basic Home Premium Professional Ultimate
CPU	300MHz or faster x86processor	1 GHz or faster x86processor	
Memory	256MB or greater	1GB or greater (Home Basic 512MB or greater)	
Hard disc	800MB available desk space	800MB available desk space	
Display	XGA(1024×768)	XGA(1024×768)	

\*Personal computer with CD-ROM drive and USB port is needed.

**\*Upgrades to the PC operating system are not supported.**

## Practice



## Breath sound

	Major Category	Minor Category	Disease
1	Normal alveolar breath sound		Normal
2	Intermittent rales (moist rales)	Fine crackles	Interstitial pneumonia, pulmonary fibrosis / pulmonary edema
3	Intermittent rales (moist rales)	Coarse crackles	Pulmonary edema, pneumonia, alveolar effusion
4	Continuous rales (dry rales)	Low pitched rhonchi (sonorous rhonchi)	Stenosis of middle-large bronchi, bronchial secretion
5	Continuous rales (dry rales)	High pitch rhonchi, wheeze	Bronchiolar stenosis, bronchial asthma
6	Continuous rales (dry rales)	High pitch rhonchi, wheeze	Bronchiolar stenosis, bronchial asthma
7	Tachypnea	Consonating rales	Nervous dyspnea
8	Intensified bronchovesicular sounds		Resting dyspnea
9	Continuous rales (dry rales)+ intermittent rales (moist rales)	High pitch rhonchi, wheeze+fine crackles	Cardiac asthma
10	Continuous rales (dry rales)	High pitch rhonchi, wheeze+prolonged exhalation	Bronchial asthma
11	Abnormal respiratory pattern	Tachypnea (shallow respiration) 60times/min	Central hyperpnea (midbrain disorder) hyperventilation syndrome
12	Abnormal respiratory pattern	Kussmaul respiration 36times/min	Diabetic ketoacidosis, uremia

## Cardiac sounds

1 Normal (no splitting of the second sound)	11 Mitral stenosis
2 Normal (split second sound)	12 Mitral insufficiency
3 Abnormal split second sound	13 Aortic stenosis
4 Increased apical second sound in hypertension	14 Aortic insufficiency
5 Apical fourth sound	15 Subaortic stenosis
6 Innocent murmur	16 Atrial septal defect
7 Aortic ejection sound	17 Ventricular septal defect
8 Mid-systolic clicks	18 Pulmonary stenosis
9 Mitral escape clicks /murmur	19 Acute mitral insufficiency
10 Tricuspid insufficiency	20 Pulmonary insufficiency